

FED. SPEC. EYE AND JAW SWIVEL

316 STAINLESS STEEL



Import



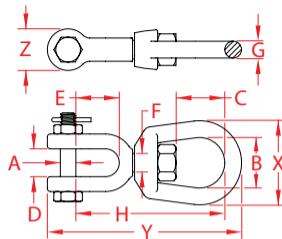
Drop Forged



Suncor Exclusive



MIL-SPEC



ITEM	A	B	C	D	E	F	G	H	X (height)	Y (length)	Z (width)	WLL (lb)	WT (lb)	PACKAGING TYPE	EACH (qty)	INNER (qty)	CARTON (qty)	UPC
S0155-FS07	1/4"	0.75"	0.80"	0.50"	0.85"	0.31"	0.25"	2.58"	1.67"	3.32"	0.74"	900	0.22	POLYBAG	1	5	150	791506034025
S0155-FS08	5/16"	1.25"	1.17"	0.56"	0.88"	0.38"	0.38"	3.31"	2.00"	4.27"	0.99"	1,600	0.53	POLYBAG	1	1	30	791506034032
S0155-FS10	3/8"	1.25"	1.06"	0.63"	1.07"	0.50"	0.38"	3.63"	2.34"	4.70"	1.03"	3,400	0.76	POLYBAG	1	1	20	791506034049
S0155-FS13	1/2"	1.50"	1.45"	0.75"	1.42"	0.63"	0.50"	4.59"	2.88"	5.97"	1.26"	4,400	1.42	POLYBAG	1	1	25	791506034056
S0155-FS16	5/8"	1.75"	1.73"	1.00"	1.50"	0.75"	0.63"	5.35"	3.00"	7.09"	1.60"	6,000	2.48	POLYBAG	1	1	15	791506034063

NOTE:

I/A/W FED. SPECIFICATION RR-C-271F TYPE VII, CLASS 3C (EXCEPT 316 STAINLESS STEEL). MEETS THE REQUIREMENTS OF: MIL-DTL-32655. SWIVELS ARE POSITIONING DEVICES AND ARE NOT INTENDED TO ROTATE UNDER LOAD. MARKED WITH SIZE AND WORKING LOAD LIMIT. ALL DIMENSIONS ARE NOMINAL (+/- 3%) AND ARE SUBJECT TO CHANGE WITHOUT NOTICE.